

LEGEND

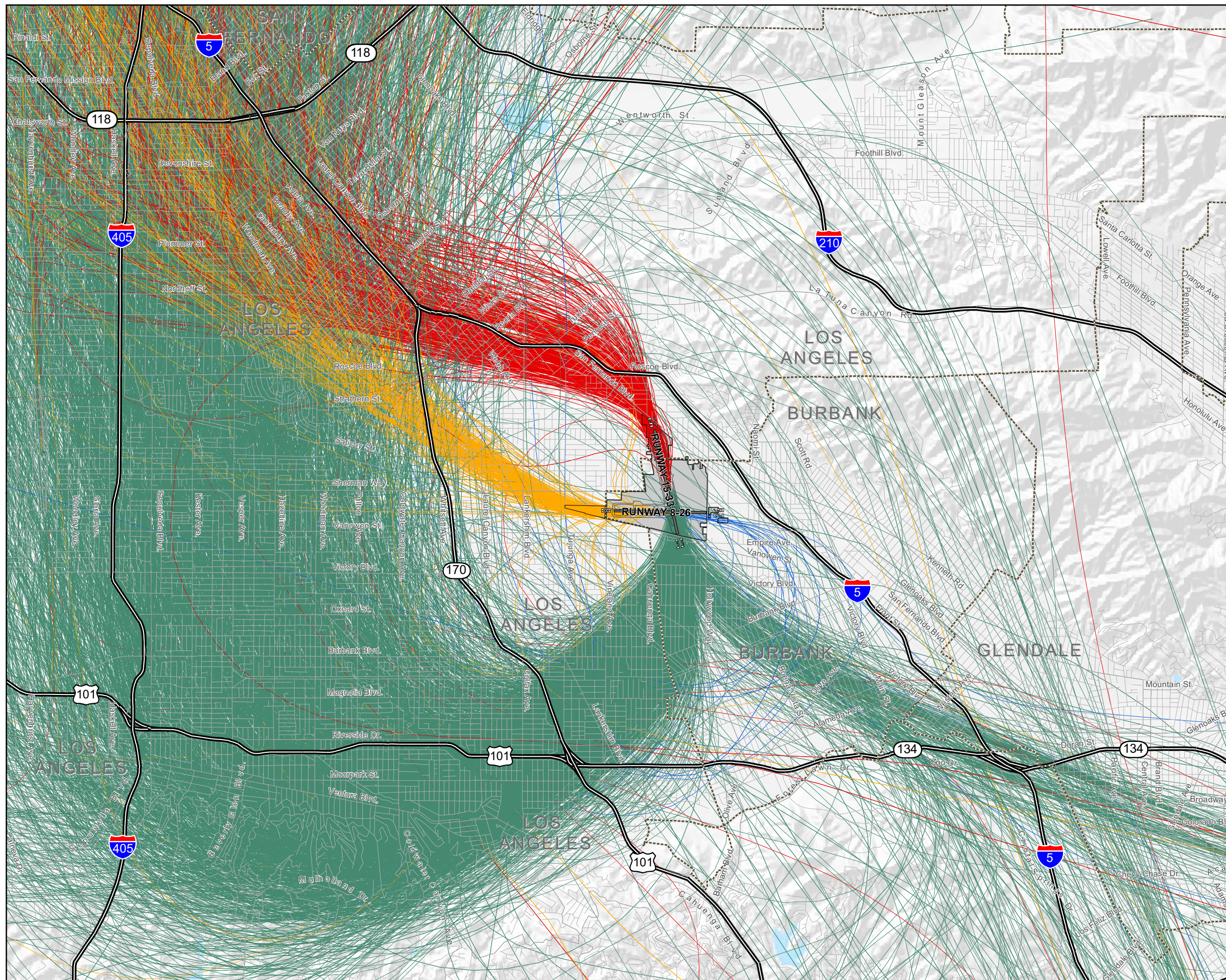
- 2005 Departure Flight Tracks - Runway 08
- 2005 Departure Flight Tracks - Runway 15
- 2005 Departure Flight Tracks - Runway 26
- 2005 Departure Flight Tracks - Runway 33
- Municipal Boundary
- Airport Boundary
- Freeways
- Roads

Source: BGPAA Total Airport Management System, 2005

NORTH
↑

Figure B-4
RADAR DEPARTURE FLIGHT TRACKS
AIR CARRIER
 FAR Part 161 Study for Bob Hope Airport
 January 2009





LEGEND

- 2005 Departure Flight Tracks - Runway 08
- 2005 Departure Flight Tracks - Runway 15
- 2005 Departure Flight Tracks - Runway 26
- 2005 Departure Flight Tracks - Runway 33
- Municipal Boundary
- Airport Boundary
- Freeways
- Roads

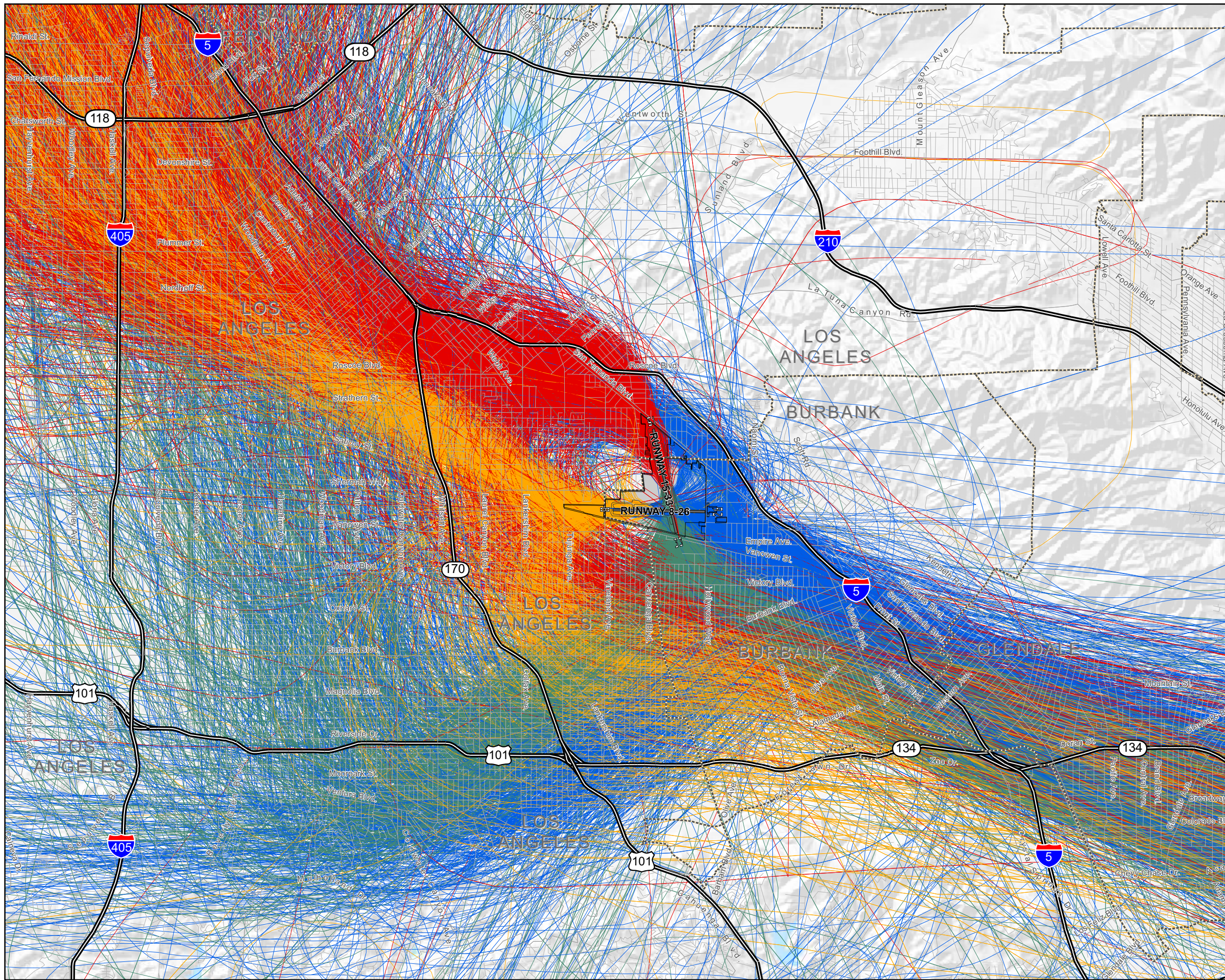
Source: BGPAA Total Airport Management System, 2005

NORTH
↑

0 1,550 3,100 6,200
Feet

Figure B-5
**RADAR DEPARTURE FLIGHT TRACKS
 BUSINESS JETS**
 FAR Part 161 Study for Bob Hope Airport
 January 2009





- LEGEND**
- 2005 Departure Flight Tracks - Runway 08
 - 2005 Departure Flight Tracks - Runway 15
 - 2005 Departure Flight Tracks - Runway 26
 - 2005 Departure Flight Tracks - Runway 33
 - - - Municipal Boundary
 - ▭ Airport Boundary
 - == Freeways
 - Roads

Source: BGPAA Total Airport Management System, 2005

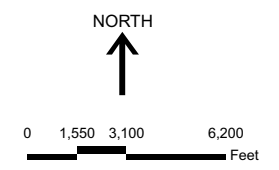
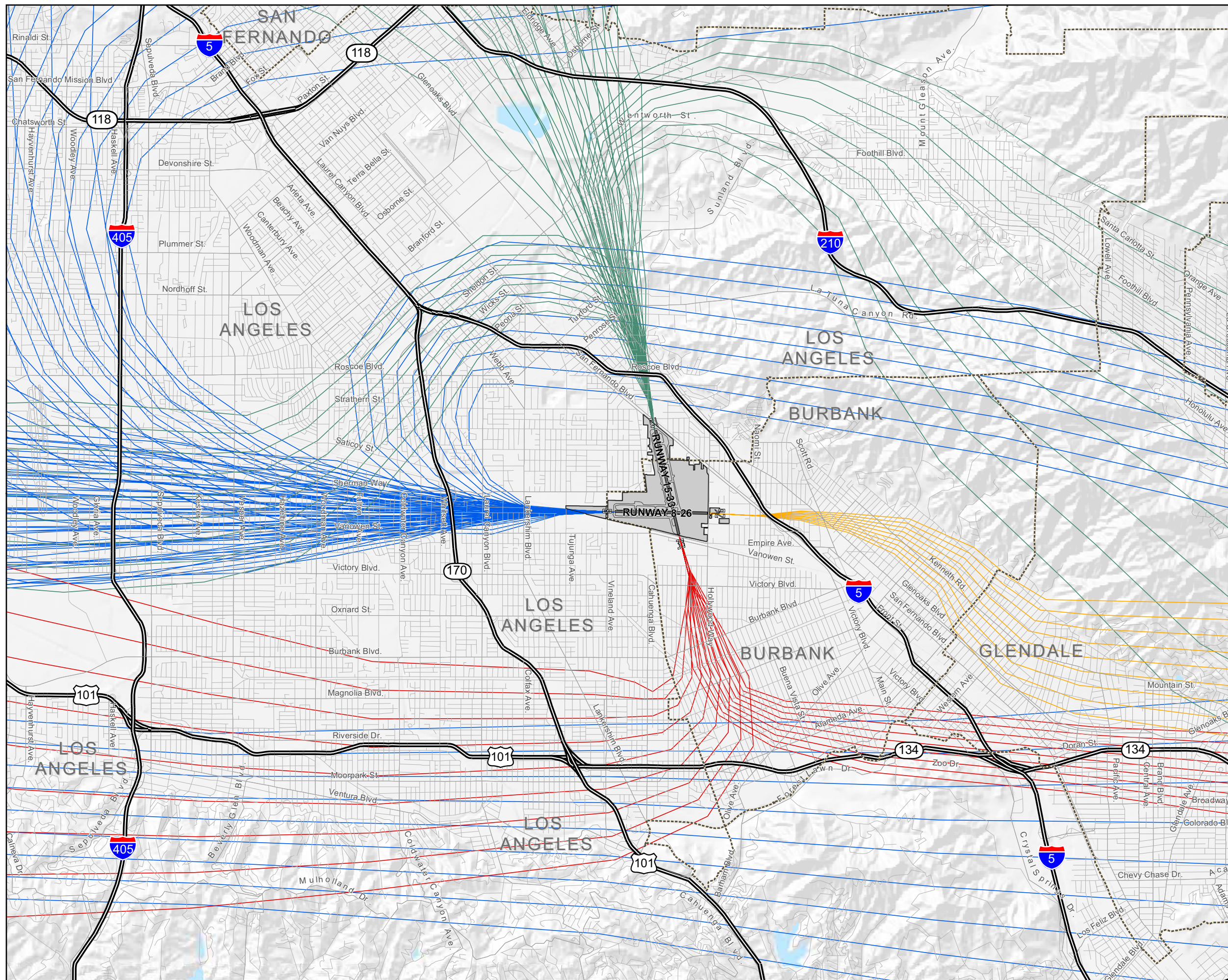


Figure B-6
RADAR DEPARTURE FLIGHT TRACKS
PISTON, TURBOPROP
 FAR Part 161 Study for Bob Hope Airport
 January 2009





- LEGEND**
- Generalized Arrival Flight Tracks - Runway 08
 - Generalized Arrival Flight Tracks - Runway 15
 - Generalized Arrival Flight Tracks - Runway 26
 - Generalized Arrival Flight Tracks - Runway 33
 - Municipal Boundary
 - Airport Boundary
 - Freeways
 - Roads

Source: Jacobs Consultancy analysis, 2006-2007

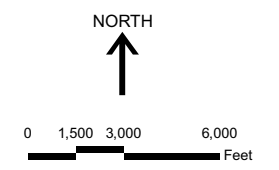


Figure B-7
**GENERALIZED ARRIVAL FLIGHT TRACKS
 FOR NOISE MODELING**
AIR CARRIER AND BUSINESS JETS
 FAR Part 161 Study for Bob Hope Airport
 January 2009

